

ASSEMBLR | EDU

ASSEMBLR CERTIFIED EDUCATOR



ASSEMBLR CERTIFIED EDUCATOR PROGRAM



Welcome to the Assemblr Certified Educator (ACE) Program!

Assemblr Certified Educator (ACE) is a program where teachers can develop practical skills to use Assemblr professionally. Let us guide you into the world of AR, get licensed, and enjoy valuable insights and resources as you become part of our certified teachers' community and provide feedback to make the platform even better for everyone!

WHAT DOES AN ASSEMBLR CERTIFIED EDUCATOR DO?

Our ACE members use Assemblr for different teaching purposes. Depending on what they teach or the way they communicate the lesson to their students, our Assemblr Certified Educators have their ways to use Assemblr as a tool to present their lessons and create an engaging classroom experience. They will also participate in providing feedback, report bugs, share insights, get connected with our growing network of teachers around the world, be acknowledged for your innovative AR practices at class and go further in your professional work, send us ideas of new features or even be a local representative of Assemblr EDU for their school.

WHO ARE THE ASSEMBLR CERTIFIED EDUCATORS?

ACE members are educators who have passed the qualification test and will officially represent Assemblr EDU in schools and help other educators to use the platform in the classroom and their communities. They will have regular contact with the Assemblr EDU team to provide recommendations and feedback that have a key role in improving Assemblr Edu.



★ HOW CAN I BECOME AN ASSEMBLR CERTIFIED EDUCATOR?

ACE members are educators who have passed the qualification test and will officially represent Assemblr EDU in schools and help other educators to use the platform in the classroom and their communities. They will have regular contact with the Assemblr EDU team to provide recommendations and feedback that have a key role in improving Assemblr Edu.

We accept applications every day of the month. ACE members who are elected, will be given out a list of general tasks with points to help them level up to the next stage. The more level they have achieved, the more benefits they can get!

1

Download and sign up on Assemblr EDU app

Simply download the Assemblr EDU app on App Store or Play Store. After downloading the app, register for an account on the "sign up" page.

2

Visit our website and do the test

Once your registration has been completed, visit our website:

<https://edu.assemblrworld.com/>

Click on the "**Partnership**" page, and a dropdown menu will appear. Click on the "**Educator**" option, scroll to the bottom of the page to find a link to the test.

3

Get licensed

If your application is accepted, you will get the Assemblr Certified Educator e-certificate and a separate badge. You will also get to use it and put it up on your online profiles.

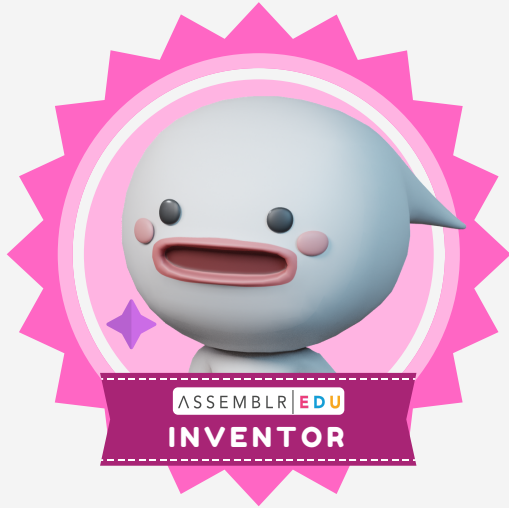
4

Join our mailing list (coming soon)

Be a part of our Assemblr Certified Educator community, where you will be able to receive updates and insights from our team, as well as meet fellow accredited teachers who have benefited from Assemblr EDU in class!

WHAT ARE THE ACE BADGES?

ACE badges are given out when you have successfully passed the qualification and test. Each badge represents different responsibilities and benefits.



ACE LEVEL 1, 2 AND 3

★ INVENTOR ★

"Invent lessons and influence others"

This is your first step in joining the Assemblr Edu community! Your role is to create projects in Assemblr using our 3D library and be able to share it with other educators or students in the classroom. Your role will also include promoting the Assemblr Edu by building your community, meet up with other Assemblr Certified Educators.

★ UNLOCKING YOUR ACHIEVEMENTS ★

LEVEL 1	LEVEL 2	LEVEL 3
<p>REQUIRED POINTS: 100 ★</p> <ul style="list-style-type: none"> • Receive a (level 1 - Inventor) personalized printable certificate you can display • Your ACE Inventor digital badge • Be rewarded with an Assemblr EDU profile frame to use in social media • Receive Assemblr EDU Teacher's Kit of resources to use in the classroom • Direct contact with the Assemblr EDU team for support and bug reports 	<p>REQUIRED POINTS: 250 ★</p> <ul style="list-style-type: none"> • Receive a (level 2 - Inventor) personalized printable certificate you can display • Your FREE account to be upgraded to Basic account with 25 seat licenses • Get a 15% commission for every Premium Subscription purchased by school • Bonus 100 MB storage 	<p>REQUIRED POINTS: 400 ★</p> <ul style="list-style-type: none"> • Receive a (level 3 - Inventor) personalized printable certificate you can display • Be featured on our website and social media as Inventor • A bonus of 10 custom graphic AR markers

POINTS	ONE-TIME TASKS	REPEATABLE TASKS
+5 ★ for every task accomplished	<ul style="list-style-type: none"> • Like our Assemblr Page on Facebook • Join our Facebook Group (Assemblr EDU Community) • Follow our Instagram (@assemblrworld & @assemblredu) • Follow our Twitter (@assemblrworld) • Subscribe to our YouTube channel Assemblr World 	<ul style="list-style-type: none"> • Start a topic on Facebook community that is related to Assemblr EDU • Tweet About Assemblr EDU on Twitter with hashtags • Create a post on Instagram about Assemblr EDU with #assemblr hashtags • Report bugs to our technical team info@assemblrworld.com
+10 ★ for every task accomplished	<ul style="list-style-type: none"> • Install Assemblr Studio on your laptop/PC • Install Assemblr EDU on your phone • Give a 5 star rating on Assemblr EDU app on Play Store or AppStore 	<ul style="list-style-type: none"> • Provide regular insights and feedback to the Assemblr EDU team • Actively promote Assemblr EDU in your online or offline education communities • Participate in testing and surveys for features in development
+20 ★ for every task accomplished		<ul style="list-style-type: none"> • Create a video tutorial on Assemblr EDU via Youtube • Create a blog post about the use of AR in Education that highlights Assemblr EDU • Create a lesson using Assemblr EDU, record the teaching activity and share it to the community (Assemblr EDU Facebook community) • Mention and present Assemblr EDU in your webinar
+50 ★ for every task accomplished		<ul style="list-style-type: none"> • Create a dedicated webinar on any streaming platform about Assemblr EDU • Participate as a speaker in webinars as Assemblr Certified Educator and help inspire educators • Join or start an event (community, EduTech events or workshop), representing Assemblr EDU
+100 ★ for every task accomplished		<ul style="list-style-type: none"> • Subscribe your school to Assemblr EDU's yearly subscription plan (basic/premium)



ACE LEVEL 4, 5 AND 6

★ EXPLORER ★

"The evangelist"

Assemblr Explorers are the voice of Assemblr EDU within their local community. Their role will be all about sharing their favorite ways to use Assemblr in the classroom, local EduTech event or even at an online or offline Edutech workshop, representing Assemblr EDU.

★ UNLOCKING YOUR ACHIEVEMENTS ★

LEVEL 4

REQUIRED POINTS: 600 ★

- Receive a (level 4 - Explorer) personalized printable certificate you can display
- Your ACE Explorer digital badge
- Be rewarded with an Assemblr EDU profile frame to use in social media
- Receive Assemblr EDU Teacher's Kit of resources to use in the classroom
- Direct contact with the Assemblr EDU team for support and bug reports

LEVEL 5

REQUIRED POINTS: 800 ★

- Receive a (level 5 - Explorer) personalized printable certificate you can display
- Your **Basic** account upgraded to **Premium** with 60 seat licenses
Get a 20% commission for every Premium Subscription purchased by school
- Bonus 250 MB storage

LEVEL 6

REQUIRED POINTS: 1000 ★

- Receive a (level 6 - Explorer) personalized printable certificate you can display
- Be featured on our website and social media as Explorer
- Bonus 20 custom graphic as AR markers

POINTS	ONE-TIME TASKS	REPEATABLE TASKS
+5 ★ for every task accomplished	<ul style="list-style-type: none"> • Like our Assemblr Page on Facebook • Join our Facebook Group (Assemblr EDU Community) • Follow our Instagram (@assemblrworld & @assemblredu) • Follow our Twitter (@assemblrworld) • Subscribe to our YouTube channel Assemblr World 	<ul style="list-style-type: none"> • Start a topic on Facebook community that is related to Assemblr EDU • Tweet About Assemblr EDU on Twitter with hashtags • Create a post on Instagram about Assemblr EDU with #assemblr hashtags • Report bugs to our technical team info@assemblrworld.com
+10 ★ for every task accomplished	<ul style="list-style-type: none"> • Install Assemblr Studio on your laptop/PC • Install Assemblr EDU on your phone • Give a 5 star rating on Assemblr EDU app on Play Store or AppStore 	<ul style="list-style-type: none"> • Provide regular insights and feedback to the Assemblr EDU team • Actively promote Assemblr EDU in your online or offline education communities • Participate in testing and surveys for features in development
+20 ★ for every task accomplished		<ul style="list-style-type: none"> • Create a video tutorial on Assemblr EDU via Youtube • Create a blog post about the use of AR in Education that highlights Assemblr EDU • Create a lesson using Assemblr EDU, record the teaching activity and share it to the community (Assemblr EDU Facebook community) • Mention and present Assemblr EDU in your webinar
+50 ★ for every task accomplished		<ul style="list-style-type: none"> • Create a dedicated webinar on any streaming platform about Assemblr EDU • Participate as a speaker in webinars as Assemblr Certified Educator and help inspire educators • Join or start an event (community, EduTech events or workshop), representing Assemblr EDU
+100 ★ for every task accomplished		<ul style="list-style-type: none"> • Subscribe your school to Assemblr EDU's yearly subscription plan (basic/premium)



ACE LEVEL 7, 8 AND 9

★ WIZARD ★

"Assemblr EDU expert and representative"

Wizards are the masters of Assemblr EDU in the classroom, events and the community. They are the star and spotlight when it comes to Assemblr EDU. As they are a power user of Assemblr EDU, they create their workshops as well as educational content to be shared with other educators.

★ UNLOCKING YOUR ACHIEVEMENTS ★

LEVEL 7

REQUIRED POINTS: 1300 ★

- Receive a (level 7 - Wizard) personalized printable certificate you can display
- Your ACE Wizard digital badge
- Be rewarded with an Assemblr EDU profile frame to use in social media
- Get premium Biology 3D library

LEVEL 8

REQUIRED POINTS: 1600 ★

- Receive a (level 8 - Wizard) personalized printable certificate you can display
- Your **Premium** account upgraded to 100 seat licenses
- Get a 25% commission for every Premium Subscription purchased by school
- Bonus 500 MB storage

LEVEL 9

REQUIRED POINTS: 2000 ★

- Receive a (level 9 - Wizard) personalized printable certificate you can display
- Be featured on our website and social media as Wizard
- Bonus 30 custom graphic as AR markers

POINTS	ONE-TIME TASKS	REPEATABLE TASKS
+5 ★ for every task accomplished	<ul style="list-style-type: none"> • Like our Assemblr Page on Facebook • Join our Facebook Group (Assemblr EDU Community) • Follow our Instagram (@assemblrworld & @assemblredu) • Follow our Twitter (@assemblrworld) • Subscribe to our YouTube channel Assemblr World 	<ul style="list-style-type: none"> • Start a topic on Facebook community that is related to Assemblr EDU • Tweet About Assemblr EDU on Twitter with hashtags • Create a post on Instagram about Assemblr EDU with #assemblr hashtags • Report bugs to our technical team info@assemblrworld.com
+10 ★ for every task accomplished	<ul style="list-style-type: none"> • Install Assemblr Studio on your laptop/PC • Install Assemblr EDU on your phone • Give a 5 star rating on Assemblr EDU app on Play Store or AppStore 	<ul style="list-style-type: none"> • Provide regular insights and feedback to the Assemblr EDU team • Actively promote Assemblr EDU in your online or offline education communities • Participate in testing and surveys for features in development
+20 ★ for every task accomplished		<ul style="list-style-type: none"> • Create a video tutorial on Assemblr EDU via Youtube • Create a blog post about the use of AR in Education that highlights Assemblr EDU • Create a lesson using Assemblr EDU, record the teaching activity and share it to the community (Assemblr EDU Facebook community) • Mention and present Assemblr EDU in your webinar
+50 ★ for every task accomplished		<ul style="list-style-type: none"> • Create a dedicated webinar on any streaming platform about Assemblr EDU • Participate as a speaker in webinars as Assemblr Certified Educator and help inspire educators • Join or start an event (community, EduTech events or workshop), representing Assemblr EDU
+100 ★ for every task accomplished		<ul style="list-style-type: none"> • Subscribe your school to Assemblr EDU's yearly subscription plan (basic/premium)



★ HOW DO I REPORT ALL THE PROGRESSES I'VE MADE?

Our team carefully reviews every progress you report to us. To report your progress, simply visit this link:

<https://bit.ly/ace-progress>



Once you've submitted a report, your submission will be reviewed by our team and we will report your latest points through email. Once you've reached the next level, you will be notified and we will send you your achievements as listed on the above.